

Name \_\_\_\_\_

Date \_\_\_\_\_

Teacher \_\_\_\_\_

Campus \_\_\_\_\_

**Kindergarten**  
**English**  
**Week 7**  
**May 11-15<sup>th</sup>**

# The Busy Pond

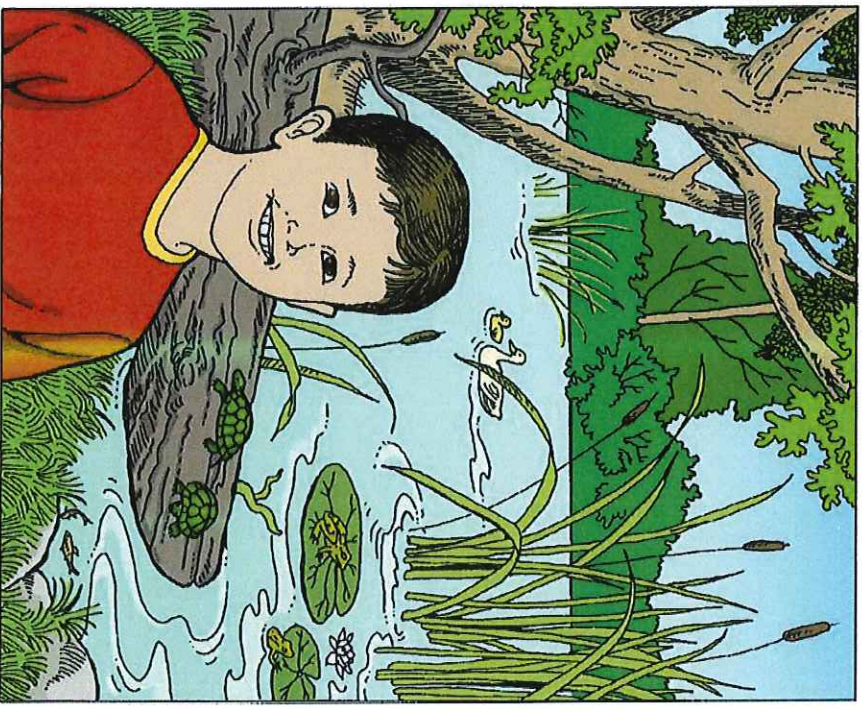
A Reading A-Z Level D Leveled Book

Word Count: 117



LEVELED BOOK • D

# The Busy Pond



Written by Kate Page • Illustrated by Cende Hill

 **Reading a-z**

Visit [www.readinga-z.com](http://www.readinga-z.com)

for thousands of books and materials.

[www.readinga-z.com](http://www.readinga-z.com)

# The Busy Pond



Written by Kate Page  
Illustrated by Cende Hill

[www.readinga-z.com](http://www.readinga-z.com)

The Busy Pond  
Level D Leveled Book  
© Learning A-Z  
Written by Kate Page  
Illustrated by Cende Hill  
All rights reserved.  
[www.readinga-z.com](http://www.readinga-z.com)

## Correlation

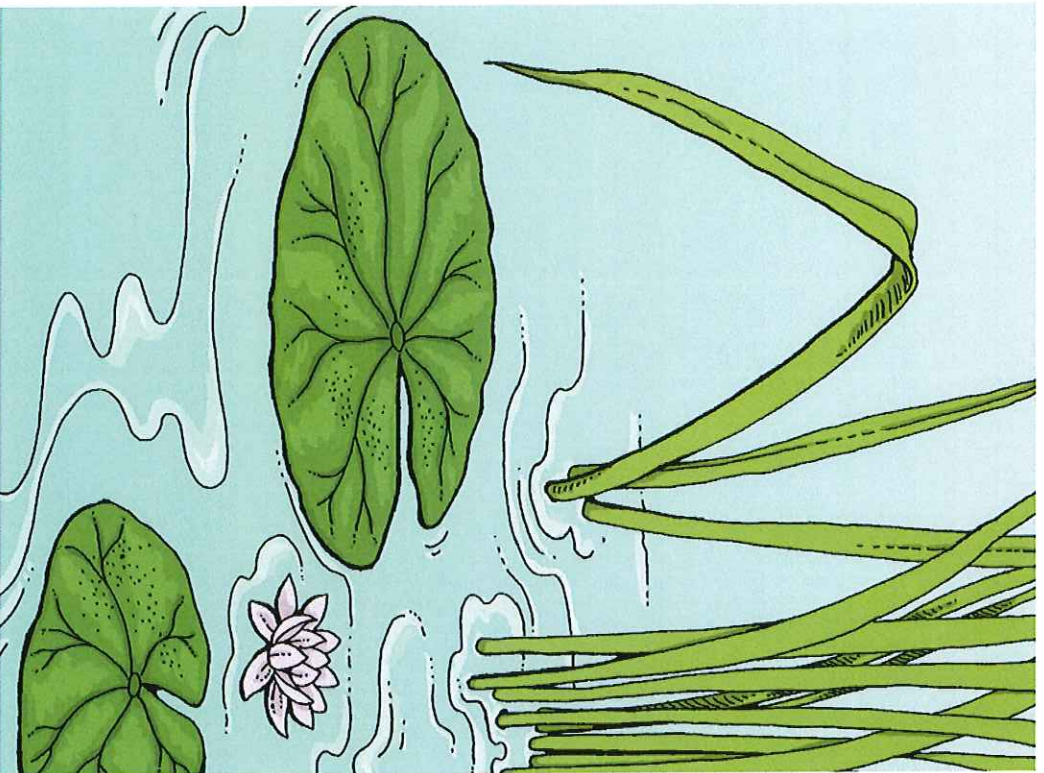
LEVEL D	
Fountas & Pinnell	D
Reading Recovery	5-6
DRA	6



I see water when  
I go to the pond.  
I can see land  
all around the water.



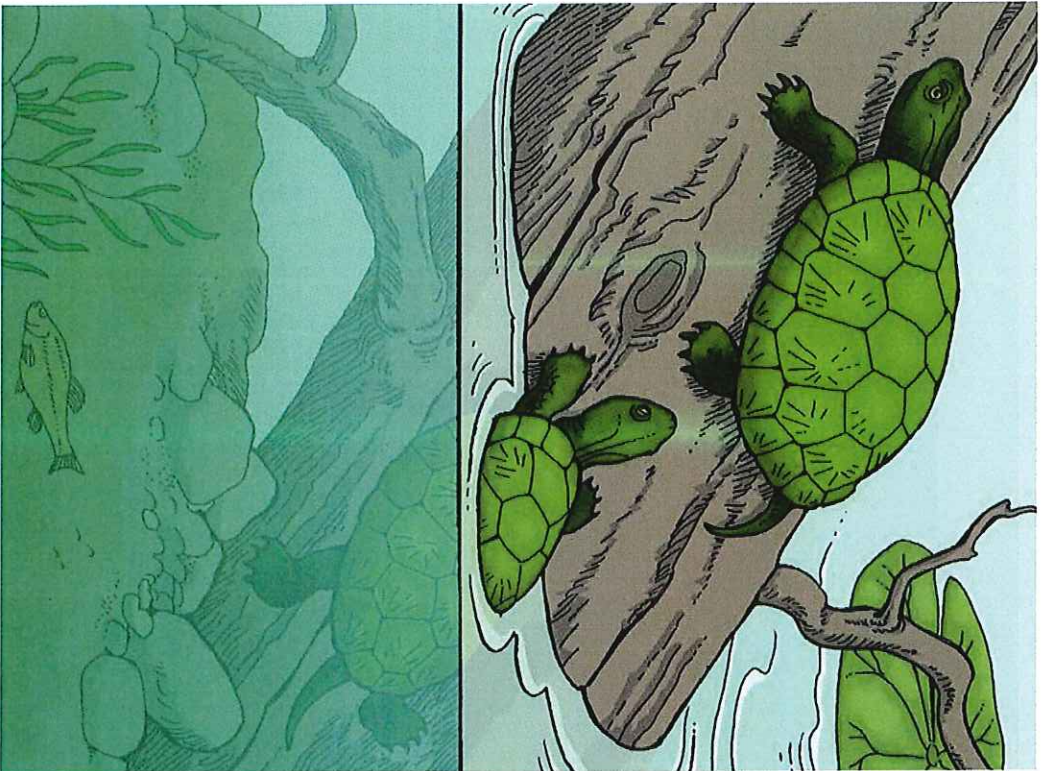
I see cattails when  
I go to the pond.  
They are very tall.



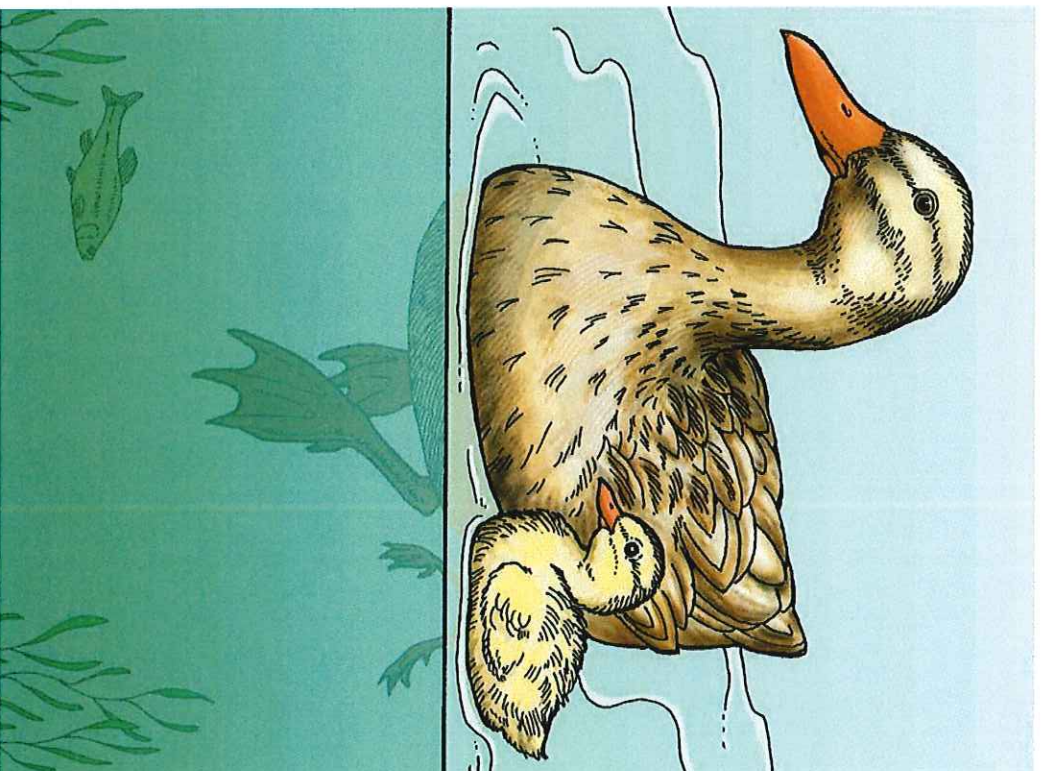
I see lily pads when  
I go to the pond.  
They are very round.



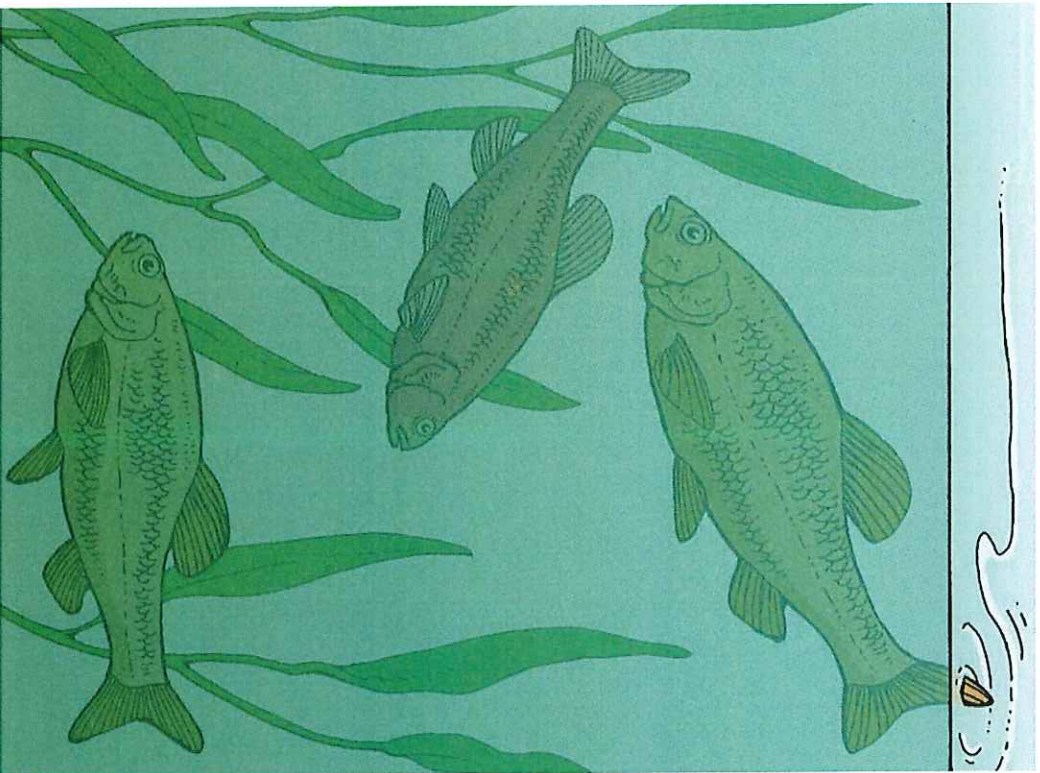
I see frogs when  
I go to the pond.  
They sit on the lily pads.



I see turtles when  
I go to the pond.  
They sit on a log.



I see ducks when  
I go to the pond.  
They swim on the water.



I see fish when  
I go to the pond.  
They swim in the water.



I see many things when  
I go to the pond.  
The pond is a busy  
place.

Is this story real  
or make-believe?  
How do you  
know?



Reality/Fantasy

How can  
you describe  
the cattails?



Main Idea and Details

How are  
the frogs and  
turtles similar?



Analyze

What kinds of  
things would you  
need to make a  
pond habitat?



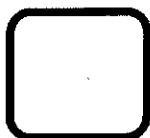
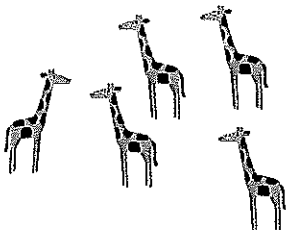
Create



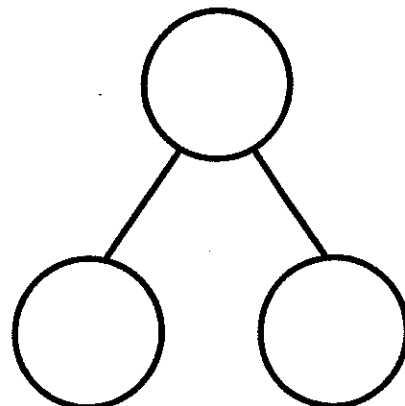
Name \_\_\_\_\_

Date \_\_\_\_\_

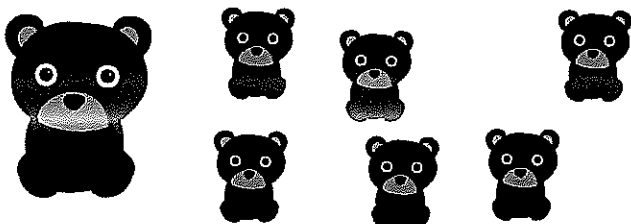
There are 7 animals. There are 5 giraffes and 2 elephants.



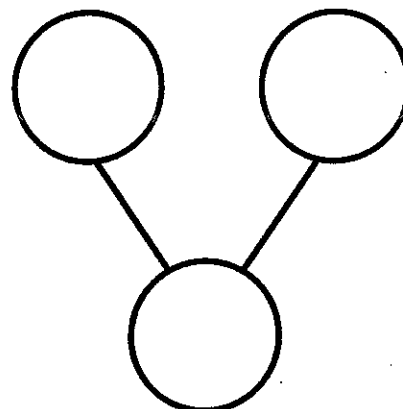
$$= 5 + 2$$



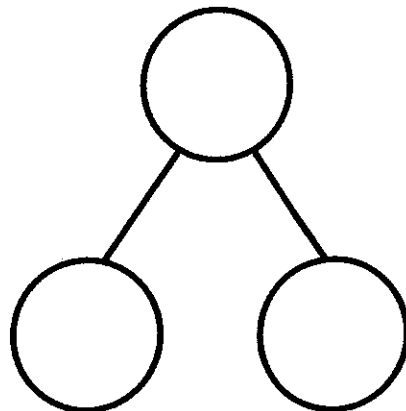
At the store, there was 1 big bear and 6 small bears. There were 7 bears.



$$1 + 6 = \square$$



$$= 2 + 5$$



Mystery Number (0–20)

C



1    7    8        

2            19    20

3    15    16        

4            4    5

Mystery Number (0–20)

C



1    15    16        

2    17    18        

3            9    10

4            13    14

**Circle the Bigger Number!**  
(0-20)

C



20	18
1	

15	13
2	

10	10
3	

14	16
4	

17	15
5	

12	14
6	

15	11
7	

7	7
8	

6	8
9	

9	7
10	

12	10
11	

9	9
12	